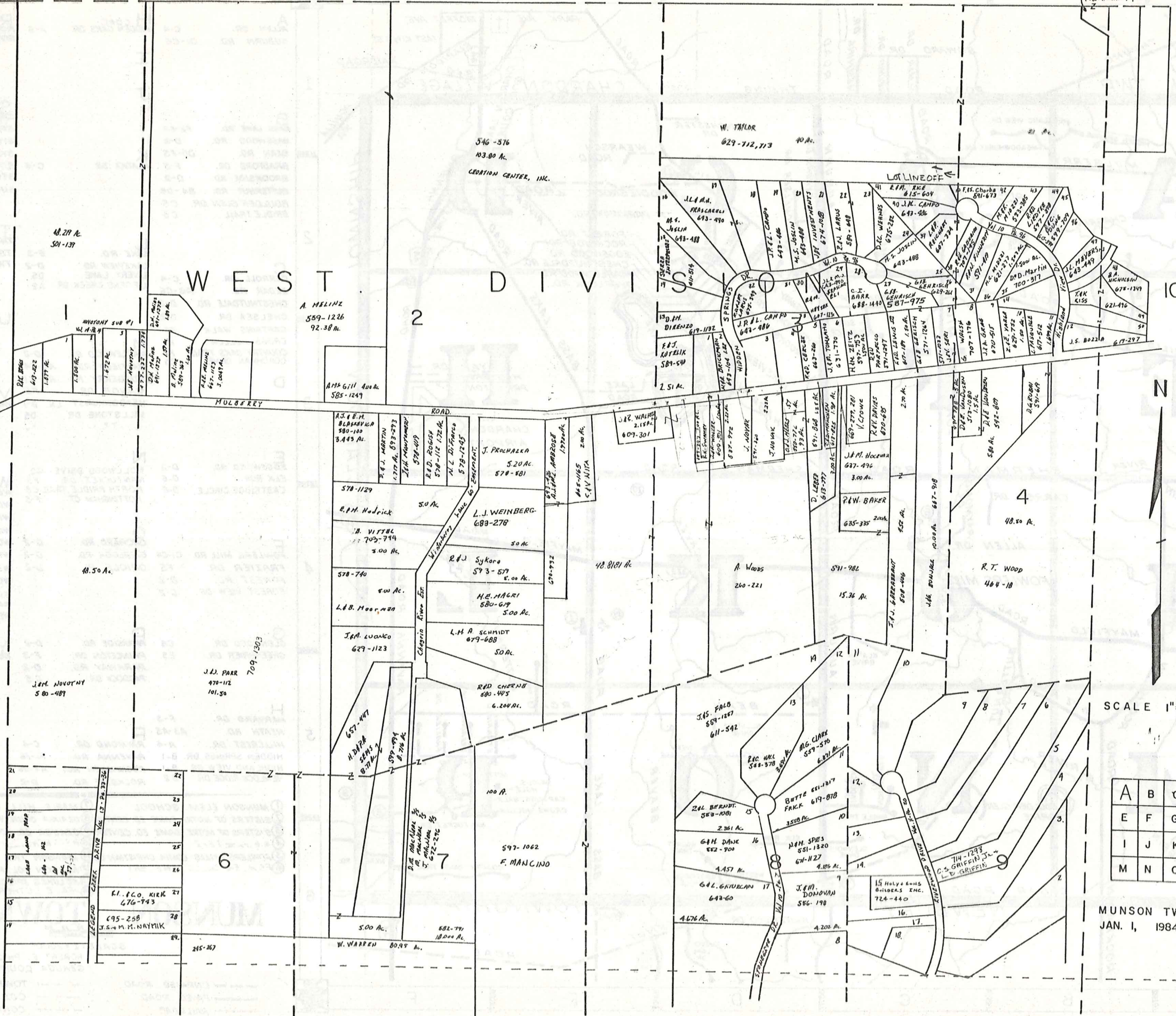




LAKE CHARDON TWP

711-679  
Z.C.A.C.  
P.O. MAHONEY & B.J. BIGHAM

CHESTER TWP



All lots except  
where wise noted  
to Jay Inv.  
589-112



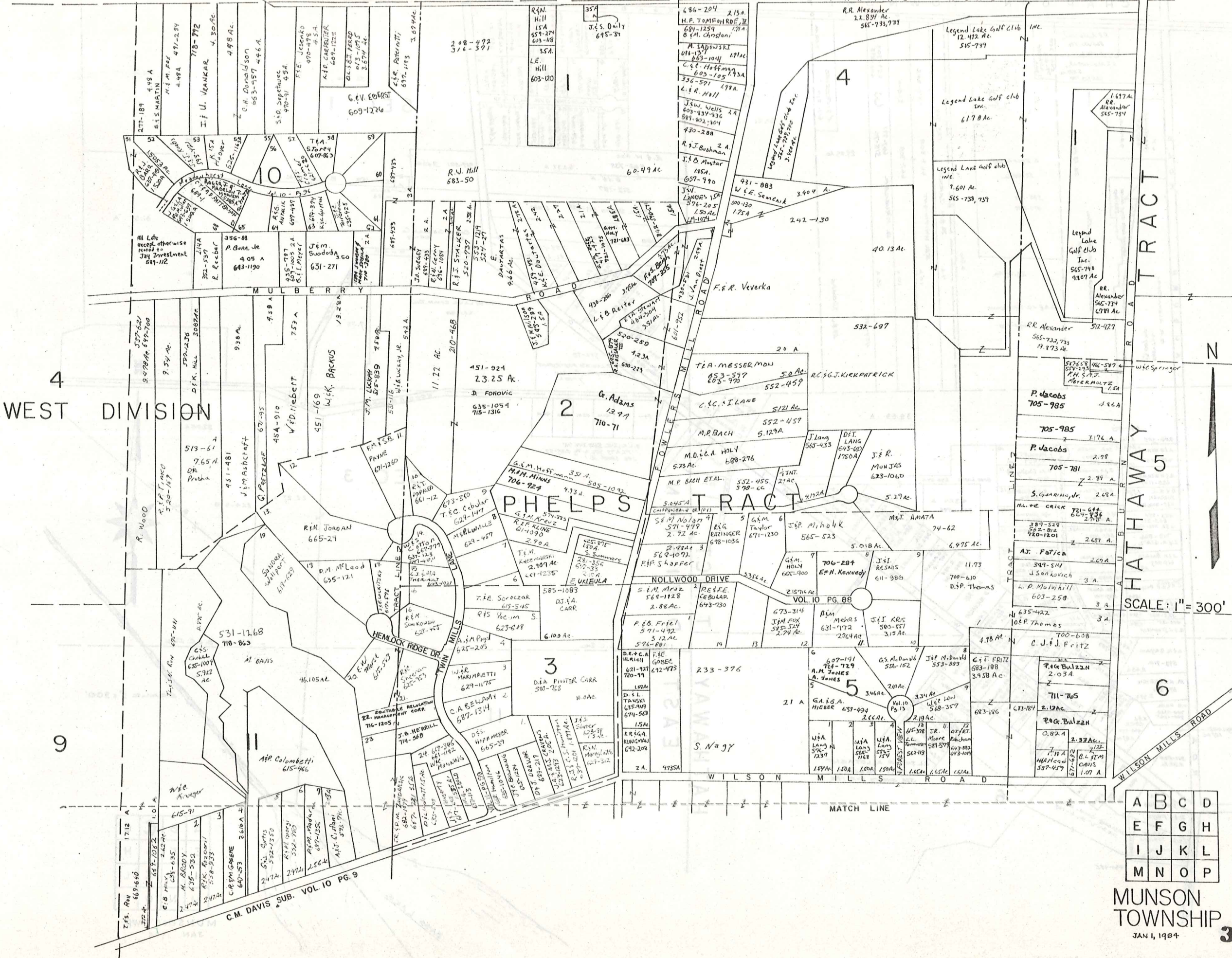
SCALE 1" = 300'

A	B	C	D
E	F	G	H
I	J	K	L
M	N	O	P

MUNSON TWP  
JAN. 1, 1984

CHARLTON TOWNSHIP

THWING ROAD



4 WEST DIVISION

HATHAWAY TRACT

SCALE: 1" = 300'

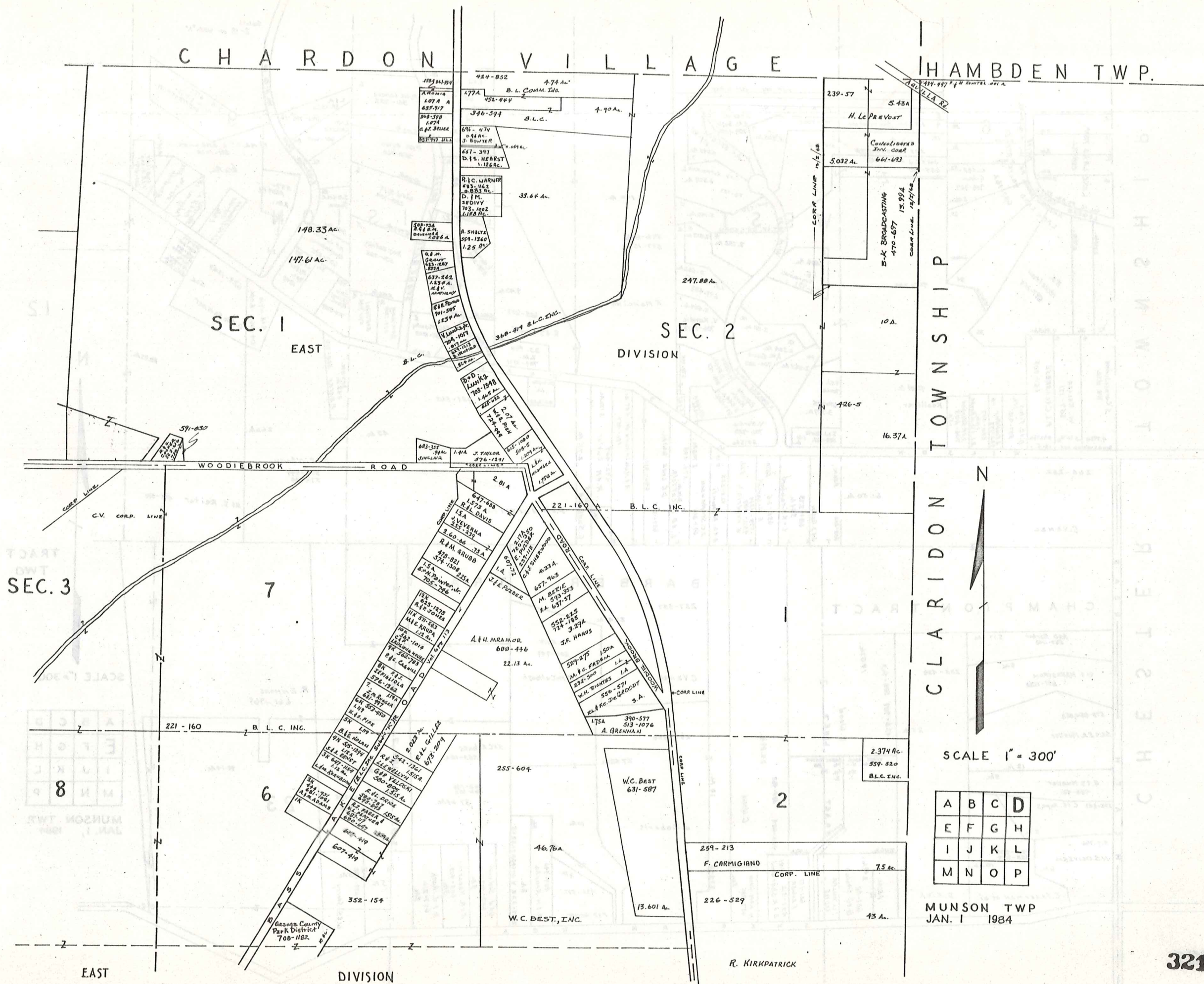
A	B	C	D
E	F	G	H
I	J	K	L
M	N	O	P

MUNSON TOWNSHIP JAN 1, 1984 319



CHARDON VILLAGE

HAMB DEN TWP.



CLARIDON TOWNSHIP

SCALE 1" = 300'

A	B	C	D
E	F	G	H
I	J	K	L
M	N	O	P

MUNSON TWP  
JAN. 1 1984

T O W N S H I P

C H E S T E R

CHAMPION TRACT

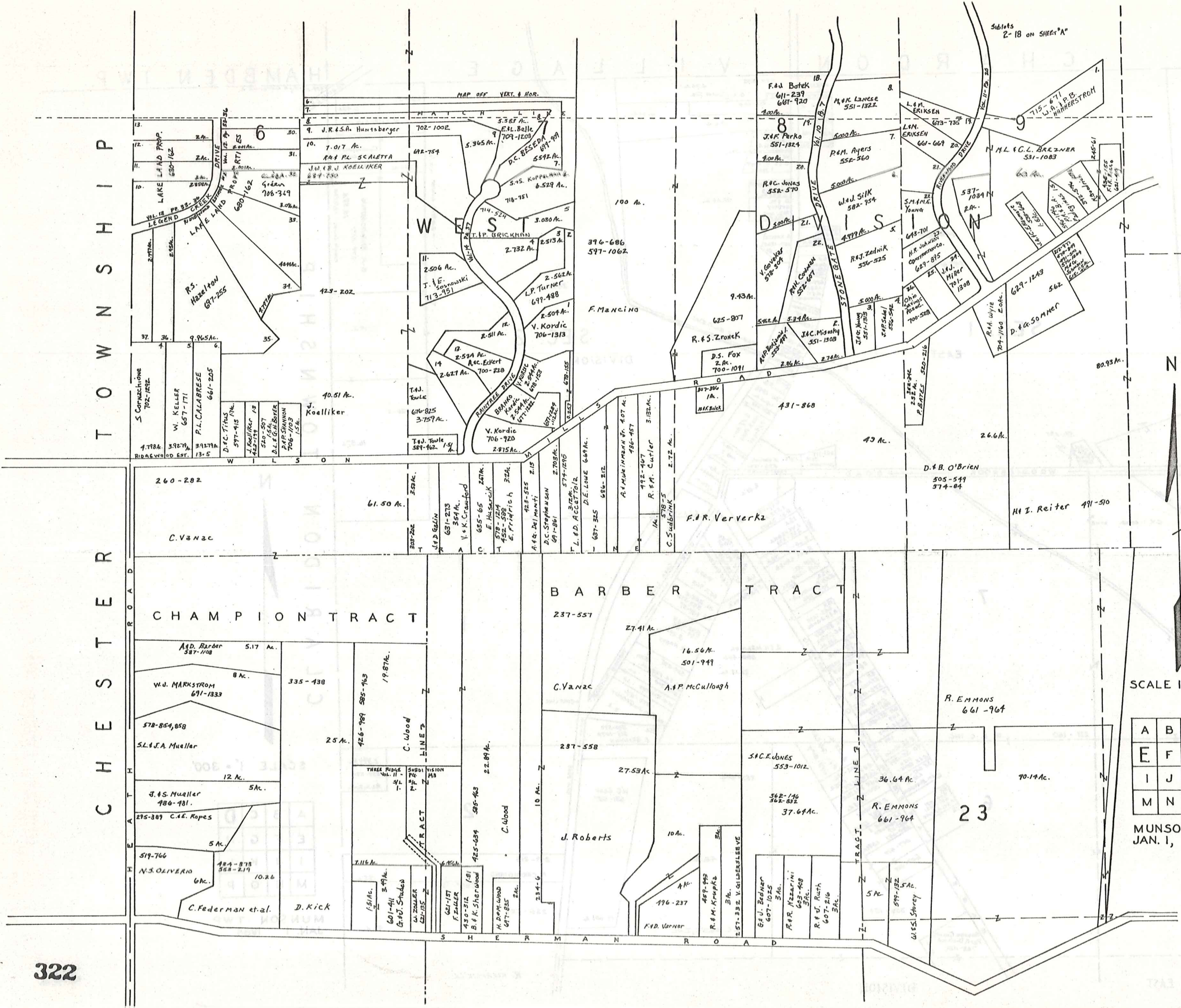
BARBER TRACT

TRACT TWO

SCALE 1" = 300'

A	B	C	D
E	F	G	H
I	J	K	L
M	N	O	P

MUNSON TWP. JAN. 1, 1984



12

23

80.93 Ac.

26.6 Ac.

431-860

396-686  
597-1062

100 Ac.

43 Ac.

2.72 Ac.

27.41 Ac.

16.56 Ac.

27.53 Ac.

10 Ac.

196-237

5 Ac.

5 Ac.

5 Ac.

5 Ac.

5 Ac.

5 Ac.

5 Ac.

5 Ac.

5 Ac.

5 Ac.

5 Ac.

5 Ac.

5 Ac.

5 Ac.

5 Ac.

5 Ac.

5 Ac.

5 Ac.

5 Ac.

5 Ac.

5 Ac.

5 Ac.

5 Ac.

5 Ac.

5 Ac.

5 Ac.

5 Ac.

5 Ac.

5 Ac.

5 Ac.

5 Ac.

5 Ac.

5 Ac.

5 Ac.

5 Ac.

5 Ac.

5 Ac.

5 Ac.

5 Ac.

5 Ac.

5 Ac.

5 Ac.

5 Ac.

5 Ac.

5 Ac.

5 Ac.

5 Ac.

5 Ac.

5 Ac.

5 Ac.

5 Ac.

5 Ac.

5 Ac.

5 Ac.

5 Ac.

5 Ac.

5 Ac.

5 Ac.

5 Ac.

5 Ac.

5 Ac.

5 Ac.

5 Ac.

5 Ac.

5 Ac.

5 Ac.

5 Ac.

5 Ac.

5 Ac.

5 Ac.

5 Ac.

5 Ac.

5 Ac.

5 Ac.

5 Ac.

5 Ac.

5 Ac.

5 Ac.

5 Ac.

5 Ac.

5 Ac.

5 Ac.

5 Ac.

5 Ac.

5 Ac.

5 Ac.

5 Ac.

5 Ac.

5 Ac.

5 Ac.

5 Ac.

5 Ac.

5 Ac.

5 Ac.

5 Ac.

5 Ac.

5 Ac.

5 Ac.

5 Ac.

5 Ac.

5 Ac.

5 Ac.

5 Ac.

5 Ac.

5 Ac.

5 Ac.

5 Ac.

5 Ac.

5 Ac.

5 Ac.

5 Ac.

5 Ac.

5 Ac.

5 Ac.

5 Ac.

5 Ac.

5 Ac.

5 Ac.

5 Ac.

5 Ac.

5 Ac.

5 Ac.

5 Ac.

5 Ac.

5 Ac.

5 Ac.

5 Ac.

5 Ac.

5 Ac.

MATCH LINE

WILSON MILLS

427-537  
724-258  
1.50 A  
H. REITER  
725-230  
1.50 A  
S.P. TUTTLE  
657-080  
1.0 A  
R. E. BARBER  
520-955  
12 A

217-605  
637-248

WEST DIVISION

12

H.J. Reiter 191-570

J.R.M. VanCura

20.758 A  
PHELPS  
RC. R.K. WANG  
469-131  
469-128  
637-143

80.583 A  
RC. R.K. WANG

469-133  
637-144

E. Poutasse

TRACT LINE 1

206-209  
315-406  
501-723  
571-1017

23

22

78.44

R. Emmons et al.

R. & B. LEIKEN  
611-206  
657-405  
16.36 A.

19

248-291 MP. WALSH 48.75 A

45 A  
N.E. Poutasse  
509-535

3.57 A  
E.C. Poutasse  
578-31

3.16 A  
T.M. METZGER  
699-123  
3.16 Ac.

3.15 A  
W.J. Evoly  
393-724

3.15 A  
L.B.P. HANSON  
607-286

3.20 A  
M.H. HALL, JR.  
671-022

3.18 A  
A. & J. PIANO  
488-441

3.18 A  
599-1245  
599-1247

3.10 A  
800-80  
M. KOLASZANSKI

2.27 A  
S.P. BECKER  
657-1102

2.50 A  
A. OLSO  
657-1102

2.50 A  
M. METZGER  
657-1102

2.50 A  
M. METZGER  
657-1102

2.50 A  
M. METZGER  
657-1102

2.50 A  
M. METZGER  
657-1102

2.50 A  
M. METZGER  
657-1102

2.50 A  
M. METZGER  
657-1102

2.50 A  
M. METZGER  
657-1102

2.50 A  
M. METZGER  
657-1102

2.50 A  
M. METZGER  
657-1102

2.50 A  
M. METZGER  
657-1102

2.50 A  
M. METZGER  
657-1102

2.50 A  
M. METZGER  
657-1102

2.50 A  
M. METZGER  
657-1102

2.50 A  
M. METZGER  
657-1102

2.50 A  
M. METZGER  
657-1102

2.50 A  
M. METZGER  
657-1102

2.50 A  
M. METZGER  
657-1102

2.50 A  
M. METZGER  
657-1102

2.50 A  
M. METZGER  
657-1102

2.50 A  
M. METZGER  
657-1102

2.50 A  
M. METZGER  
657-1102

2.50 A  
M. METZGER  
657-1102

2.50 A  
M. METZGER  
657-1102

2.50 A  
M. METZGER  
657-1102

ROAD

61E  
DUCX 17  
621-652  
796  
APL D'ANGELO  
641-728  
4.88 A

565-B23  
APL 4 565-924  
J.B. N.J. LUBAN  
3.76 A  
P. Richter

557-588  
T.R.A. TRACT  
10.03 A

527-339  
D.K. Hamlin  
S.A.

259-366  
H. Schika  
S.A.

723-55  
508-732  
L.F. SOMOYI  
8.03 A

1.07 A  
J.A. SN. GUMPF  
60-669  
10 A

451-766

291-413  
1.45 A  
L. Mandel  
609-707  
609-712  
J.M.H. TRENG  
18A

W.G. H.B.  
S.V.R. 013  
718-225  
674-718

R.E. Gale  
18 A

462-586  
12.5 A  
M.E.D. SAMBATINI

377-225  
J.P. BITUNTI

553-671  
J.D.L. GONZALEZ  
508 A

45 A  
N.E. Poutasse  
509-535

3.57 A  
E.C. Poutasse  
578-31

3.16 A  
T.M. METZGER  
699-123  
3.16 Ac.

3.15 A  
W.J. Evoly  
393-724

3.15 A  
L.B.P. HANSON  
607-286

3.20 A  
M.H. HALL, JR.  
671-022

3.18 A  
A. & J. PIANO  
488-441

3.18 A  
599-1245  
599-1247

3.10 A  
800-80  
M. KOLASZANSKI

2.27 A  
S.P. BECKER  
657-1102

2.50 A  
A. OLSO  
657-1102

2.50 A  
M. METZGER  
657-1102

2.50 A  
M. METZGER  
657-1102

2.50 A  
M. METZGER  
657-1102

TRACT 6

TRACT 7

N

ROAD

TRACT LINE 2

TRACT LINE 1

TRACT LINE 2

TRACT LINE 1

TRACT LINE 2

TRACT LINE 1

TRACT LINE 2

TRACT LINE 1

TRACT LINE 2

TRACT LINE 1

TRACT LINE 2

TRACT LINE 1

TRACT LINE 2

TRACT LINE 1

TRACT LINE 2

TRACT LINE 1

TRACT LINE 2

TRACT LINE 1

TRACT LINE 2

TRACT LINE 1

TRACT LINE 2

TRACT LINE 1

TRACT LINE 2

TRACT LINE 1

TRACT LINE 2

TRACT LINE 1

TRACT LINE 2

TRACT LINE 1

TRACT LINE 2

TRACT LINE 1

TRACT LINE 2

TRACT LINE 1

TRACT LINE 2

TRACT LINE 1

TRACT LINE 2

TRACT LINE 1

TRACT LINE 2

TRACT LINE 1

TRACT LINE 2

TRACT LINE 1

TRACT LINE 2

TRACT LINE 1

TRACT LINE 2

TRACT LINE 1

TRACT LINE 2

TRACT LINE 1

TRACT LINE 2

TRACT LINE 1

TRACT LINE 2

TRACT LINE 1

TRACT LINE 2

TRACT LINE 1

TRACT LINE 2

TRACT LINE 1

TRACT LINE 2

TRACT LINE 1

TRACT LINE 2

TRACT LINE 1

TRACT LINE 2

TRACT LINE 1

TRACT LINE 2

TRACT LINE 1

TRACT LINE 2

TRACT LINE 1

TRACT LINE 2

TRACT LINE 1

TRACT LINE 2

TRACT LINE 1

TRACT LINE 2

TRACT LINE 1

TRACT LINE 2

TRACT LINE 1

TRACT LINE 2

TRACT LINE 1

TRACT LINE 2

TRACT LINE 1

TRACT LINE 2

TRACT LINE 1

TRACT LINE 2

TRACT LINE 1

TRACT LINE 2

TRACT LINE 1

TRACT LINE 2

TRACT LINE 1

TRACT LINE 2

TRACT LINE 1

TRACT LINE 2

TRACT LINE 1

TRACT LINE 2

TRACT LINE 1

TRACT LINE 2

TRACT LINE 1

TRACT LINE 2

TRACT LINE 1

TRACT LINE 2

TRACT LINE 1

TRACT LINE 2

TRACT LINE 1

TRACT LINE 2

TRACT LINE 1

TRACT LINE 2

TRACT LINE 1

TRACT LINE 2

TRACT LINE 1

TRACT LINE 2

TRACT LINE 1

TRACT LINE 2

TRACT LINE 1

TRACT LINE 2

TRACT LINE 1

TRACT LINE 2

TRACT LINE 1

TRACT LINE 2

TRACT LINE 1

TRACT LINE 2

TRACT LINE 1

TRACT LINE 2

TRACT LINE 1

TRACT LINE 2

TRACT LINE 1

TRACT LINE 2

TRACT LINE 1

TRACT LINE 2

TRACT LINE 1

TRACT LINE 2

TRACT LINE 1

TRACT LINE 2

TRACT LINE 1

TRACT LINE 2

TRACT LINE 1

TRACT LINE 2

TRACT LINE 1

TRACT LINE 2

TRACT LINE 1

TRACT LINE 2

TRACT LINE 1

TRACT LINE 2

TRACT LINE 1

TRACT LINE 2

TRACT LINE 1

TRACT LINE 2

TRACT LINE 1

TRACT LINE 2

TRACT LINE 1

TRACT LINE 2

TRACT LINE 1

TRACT LINE 2

TRACT LINE 1

TRACT LINE 2

TRACT LINE 1

TRACT LINE 2

TRACT LINE 1

TRACT LINE 2

TRACT LINE 1

TRACT LINE 2

TRACT LINE 1

TRACT LINE 2

TRACT LINE 1

TRACT LINE 2

TRACT LINE 1

TRACT LINE 2

TRACT LINE 1

TRACT LINE 2

TRACT LINE 1

TRACT LINE 2

TRACT LINE 1

TRACT LINE 2

TRACT LINE 1

TRACT LINE 2

TRACT LINE 1

TRACT LINE 2

TRACT LINE 1

TRACT LINE 2

TRACT LINE 1

TRACT LINE 2

TRACT LINE 1

TRACT LINE 2

TRACT LINE 1

TRACT LINE 2

TRACT LINE 1

TRACT LINE 2

TRACT LINE 1

TRACT LINE 2

TRACT LINE 1

TRACT LINE 2

TRACT LINE 1

TRACT LINE 2

TRACT LINE 1

TRACT LINE 2

TRACT LINE 1

TRACT LINE 2

TRACT LINE 1

TRACT LINE 2

TRACT LINE 1

TRACT LINE 2

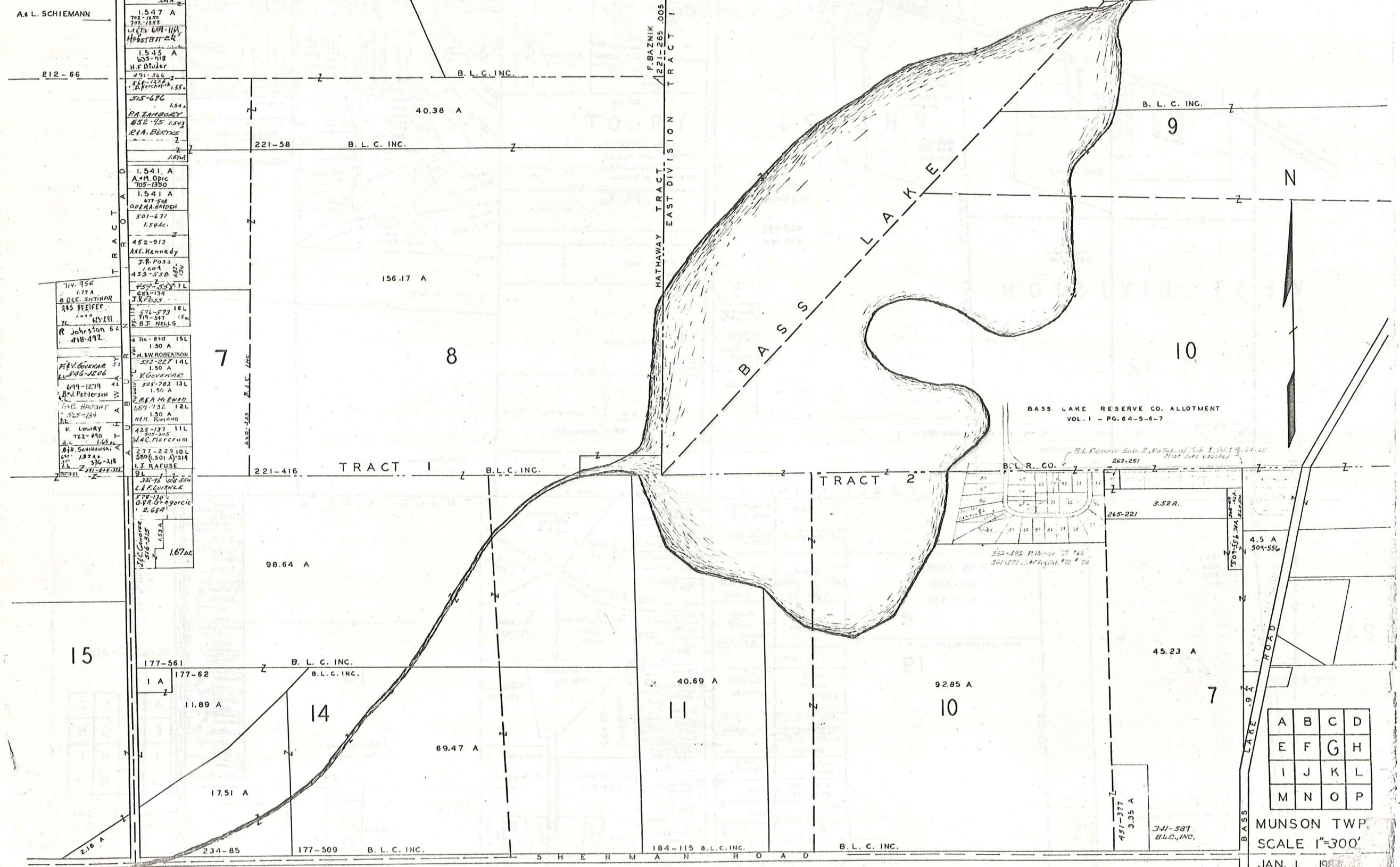
TRACT LINE 1

TRACT LINE 2

# EAST DIVISION

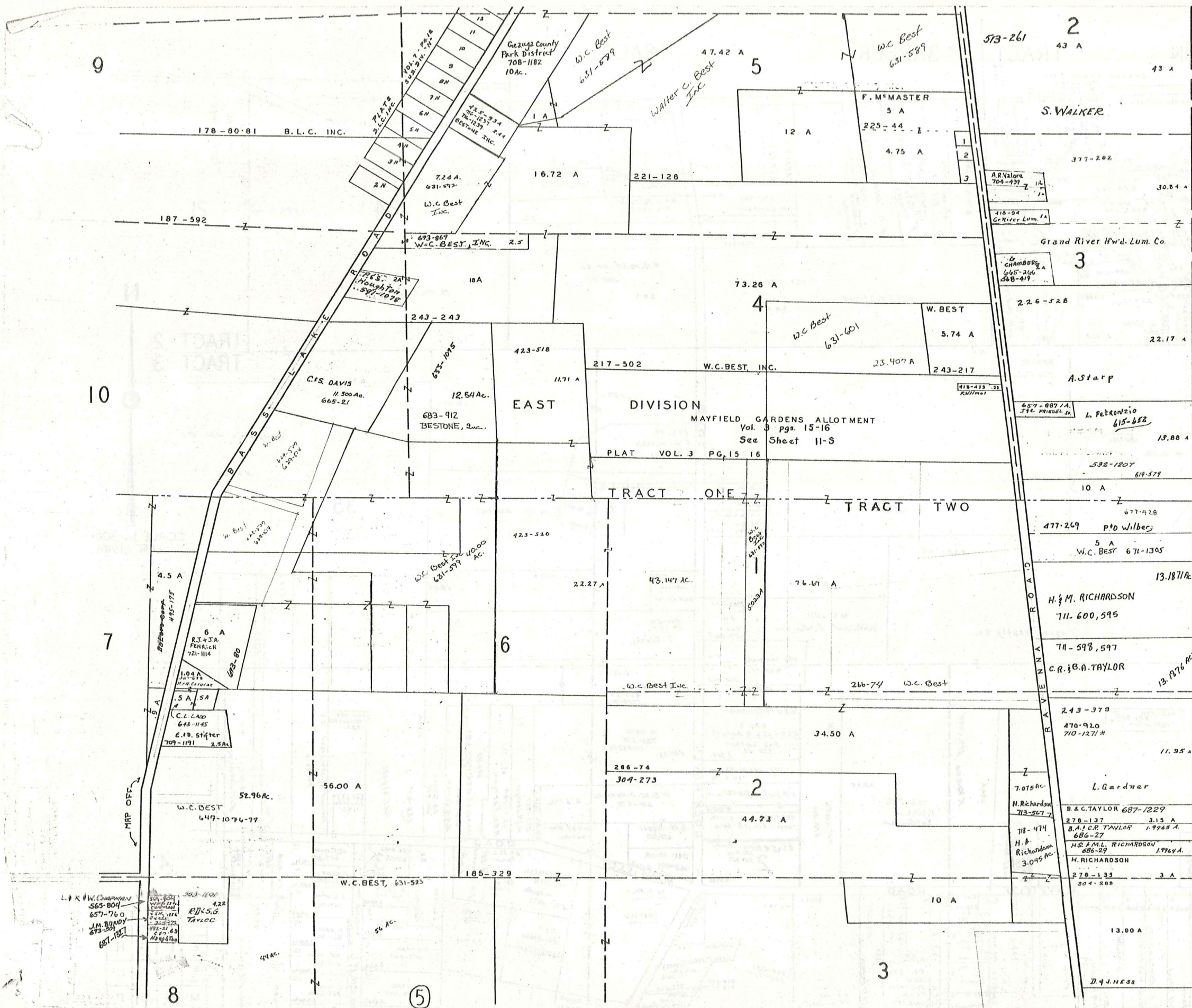
**TRACT I**

1.547 A 705-1252 W. L. COOPER HORSTBACHER
1.545 A 653-418 H. F. DUDER
491-366 548-1252 1.67ac
515-676 1.54 A PA ZANBOBY 652-25 1.54 R. A. BEYER
1.541 A A. M. OBI 705-1350
1.541 A 677-548 O. H. A. HADEN
501-631 1.54ac
452-913 A. E. KENNEDY J. R. POSS 700 A 453-530 1.54
714-956 1.77 A O. D. E. INTIMAR 445 DEEFEE
413-291 R. JOHNSTON 6 L 418-492
676-818 1.5L 1.50 A H. W. ROBERTSON
512-227 1.4L 1.50 A V. GOVERNOR
508-782 1.3L 1.50 A R. R. McEWEE
507-732 1.2L 1.30 A H. H. ROMANO
425-137 1.1L 505-285 W. C. MARCUM
277-229 1.0L 500 (1.30) A-219 I. J. RAJUSE
341-558 L. F. LAURIE 578-130 G. R. G. GORCIC 2.68 A
1.67ac



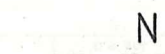
A	B	C	D
E	F	G	H
I	J	K	L
M	N	O	P

MUNSON TWP.  
SCALE 1"=300'  
JAN. 1, 1987



1 S.M. MASTER 493-656  
 2 W.C. CHAMBERS 523-386  
 3 J.H.A. CHAPMAN 684-1253

NEW ORIGINAL LOT LINE  
 PER PLAT 1870  
 OLD ORIGINAL LOT LINE  
 PER PLATS 1830 & 1846  
 SEE MUNSON TWP.  
 (PROBLEM AREA) FILE



SCALE 1"=300'

A	B	C	D
E	F	G	H
I	J	K	L
M	N	O	P

MUNSON TWP.  
 JAN 1, 1947

CHAMPION TRACT

BARBER TRACT

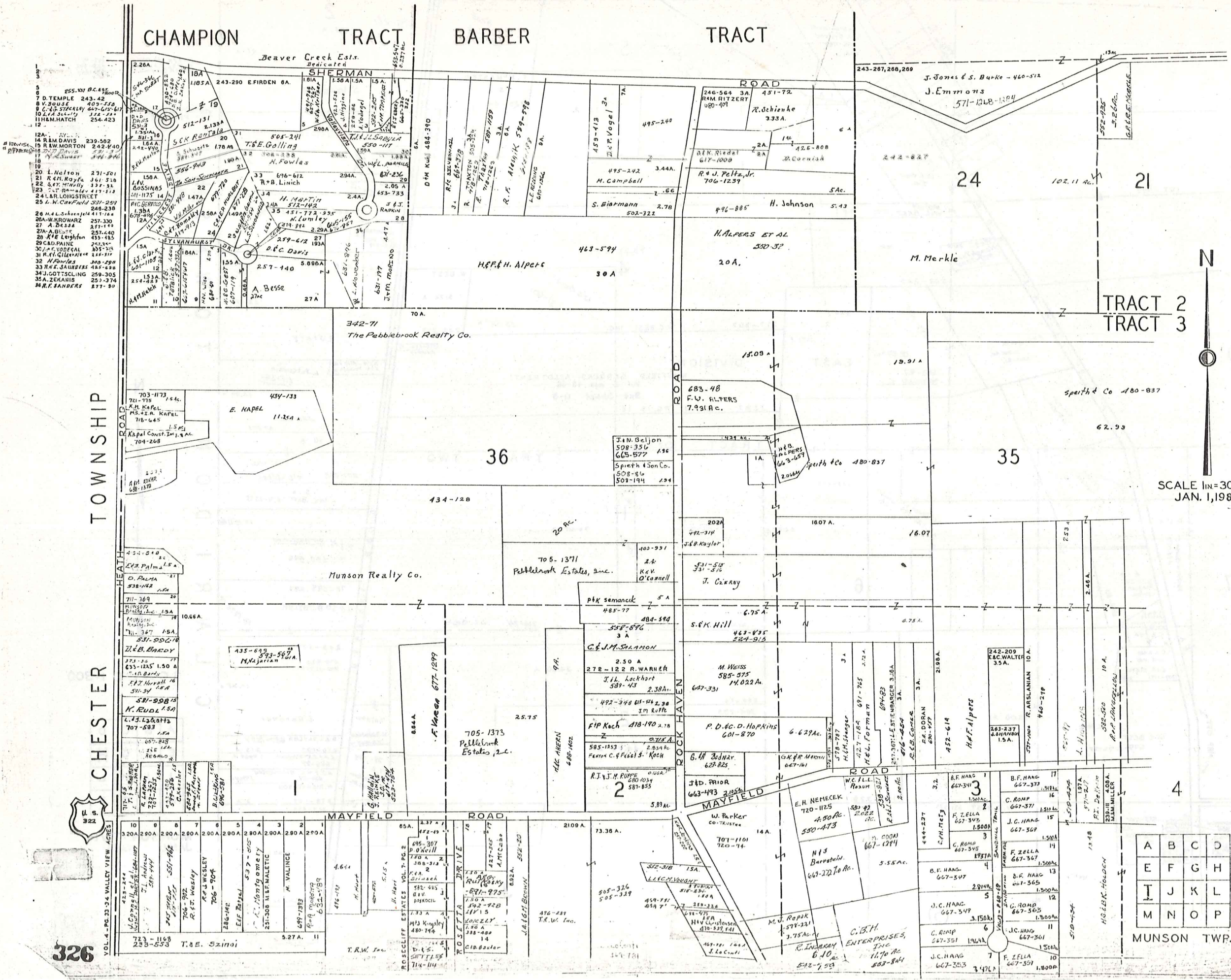
TRACT

TRACT 2  
TRACT 3

SCALE 1"=300'  
JAN. 1, 1984

A	B	C	D
E	F	G	H
I	J	K	L
M	N	O	P

MUNSON TWP.



- 12A. N. Davis 239-502
- 13 R.W. MORTON 242-940
- 14 R.W. MORTON 242-940
- 15 R.W. MORTON 242-940
- 16 R.W. MORTON 242-940
- 17 R.W. MORTON 242-940
- 18 R.W. MORTON 242-940
- 19 R.W. MORTON 242-940
- 20 L. Nelson 231-501
- 21 R. E. Kelly 361-338
- 22 S. E. Kelly 361-338
- 23 S. E. Kelly 361-338
- 24 R. Longstreet 254-423
- 25 L. R. Longstreet 254-423
- 26 H. L. Schenck 417-164
- 27 A. DeSola 257-440
- 28 R. E. Leighton 435-485
- 29 C. A. Paine 262-334
- 30 J. P. Vodegal 305-334
- 31 H. M. Gill 305-334
- 32 H. M. Gill 305-334
- 33 R. E. Saunders 445-688
- 34 J. Gottschling 259-305
- 35 A. Zerkans 253-374
- 36 R. P. Sanders 277-30

TOWNSHIP

CHESTER

326

VOL. 4 - PG. 33 & VALLEY VIEW ACRES

U.S. 322

ROSETTA DRIVE

MAYFIELD ROAD

ROCK HAVEN ROAD

SHERMAN ROAD

Beaver Creek Ests. Dedicated

342-71 The Pebblebrook Realty Co.

Munson Realty Co.

705-1373 Pebblebrook Estates, Inc.

705-1371 Pebblebrook Estates, Inc.

PK Semancik 485-77

G. E. J. M. Shannon 278-122 R. Warner

J. L. Lockhart 587-43

F. P. Koch 418-190

R. J. J. Rupp 580-1034

J. D. Prior 663-493

E. H. Nemecek 720-1125

M. Weiss 585-575

P. D. G. D. Hopkins 601-870

G. H. Behler 627-825

W. C. L. L. Rozum 580-89

B. F. Hang 667-347

F. Zella 667-367

J. C. Hang 667-367

C. Romp 667-367

J. C. Hang 667-367

C. Romp 667-367

J. C. Hang 667-367

F. Zella 667-367

J. C. Hang 667-367

C. Romp 667-367

J. C. Hang 667-367

F. Zella 667-367

J. C. Hang 667-367

C. Romp 667-367

J. C. Hang 667-367

F. Zella 667-367

J. C. Hang 667-367

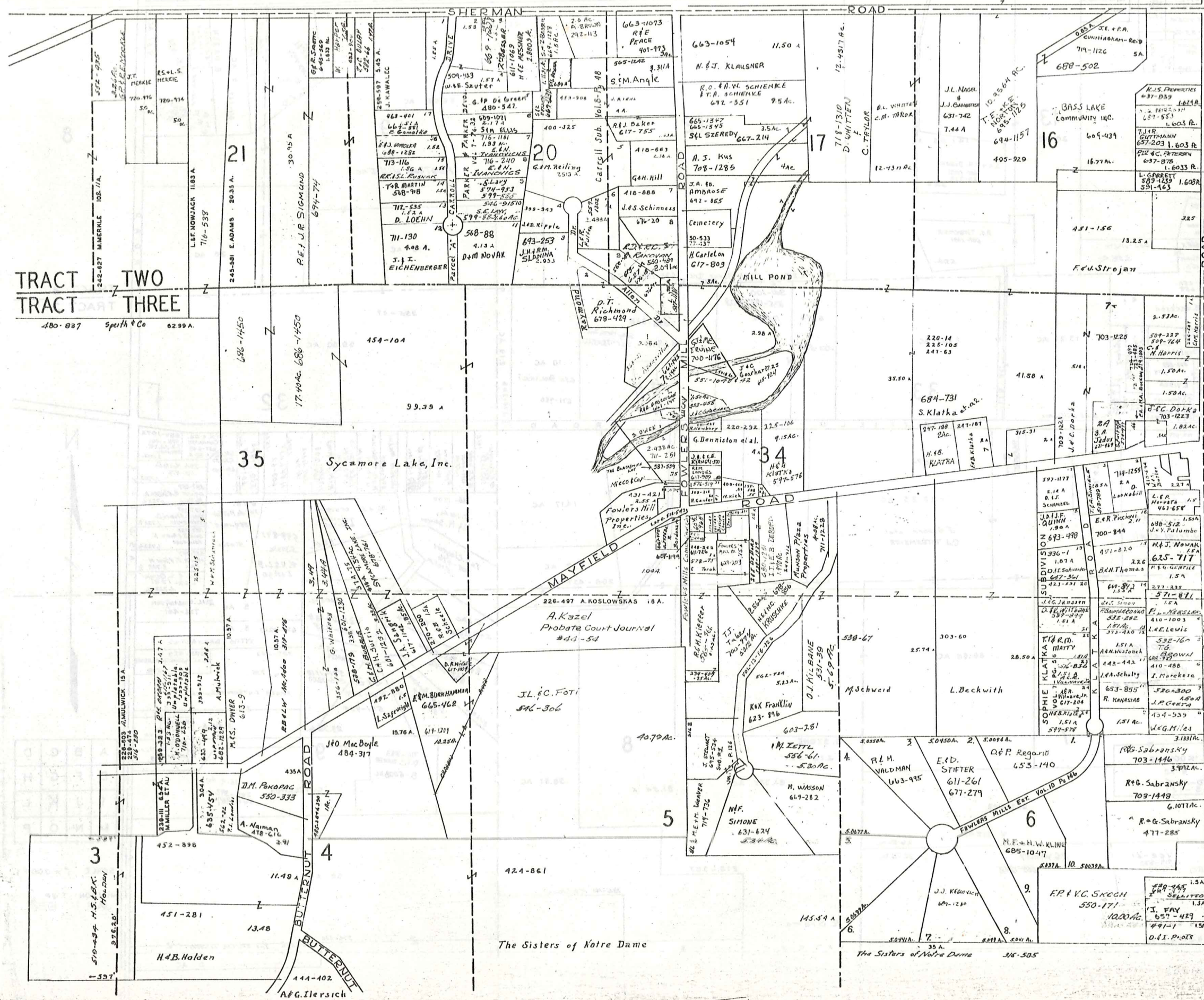
C. Romp 667-367

J. C. Hang 667-367

F. Zella 667-367

J. C. Hang 667-367

C. Romp 667-367

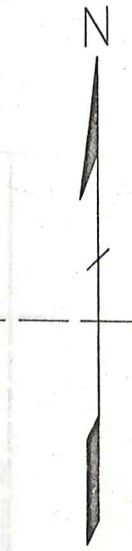
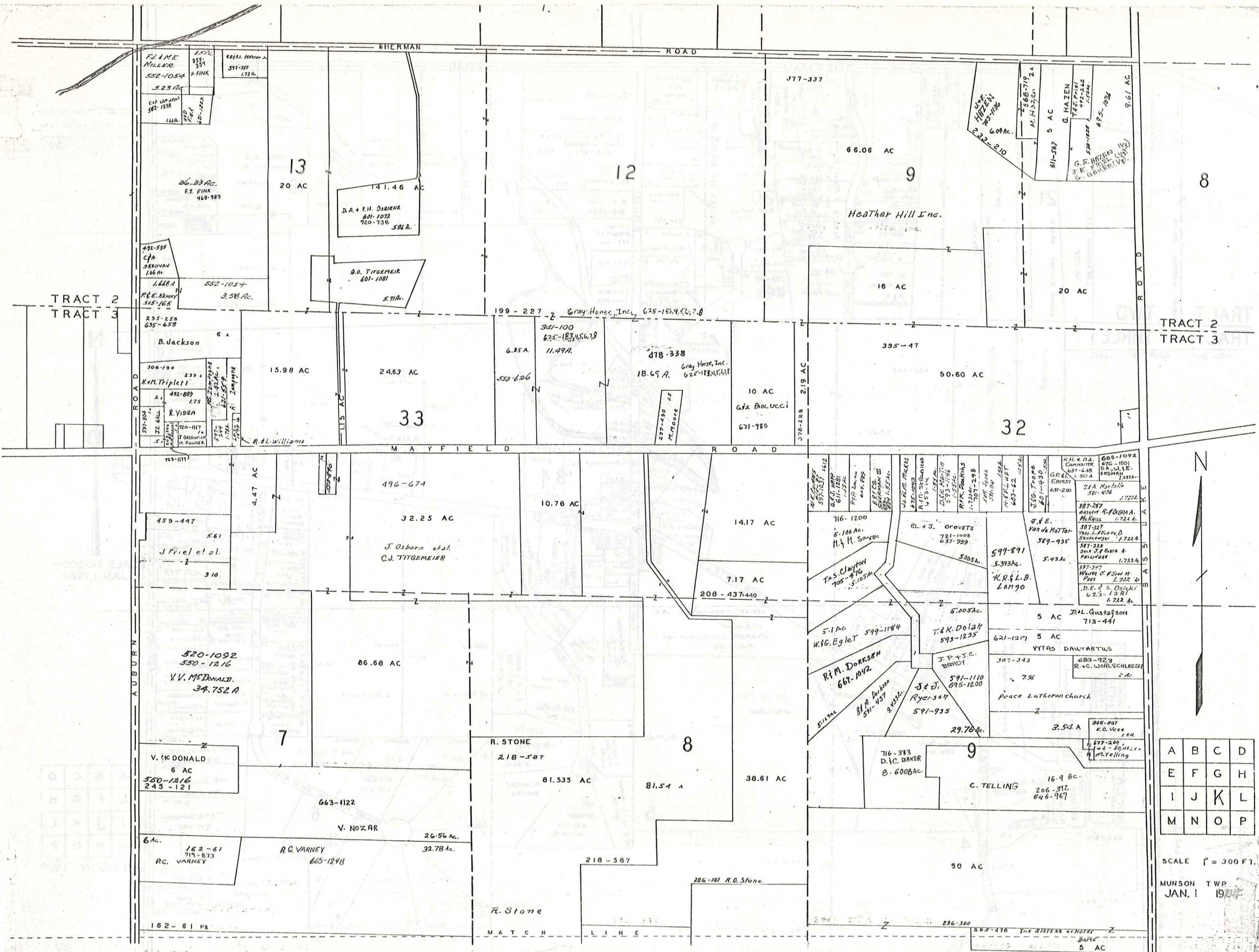


1) FOWLER'S Map 500-457/101 34  
 2) Munson Fire Dept 255-583 Lot 34  
 3) 580295 J.M. DA.  
 LUCKY - LOT 34

SCALE 1 in. = 300 FT.  
 JAN. 1, 1984

A	B	C	D
E	F	G	H
I	J	K	L
M	N	O	P

MUNSON TWP.



A	B	C	D
E	F	G	H
I	J	K	L
M	N	O	P

SCALE 1" = 300 FT.  
 MUNSON TWP  
 JAN. 1 1927

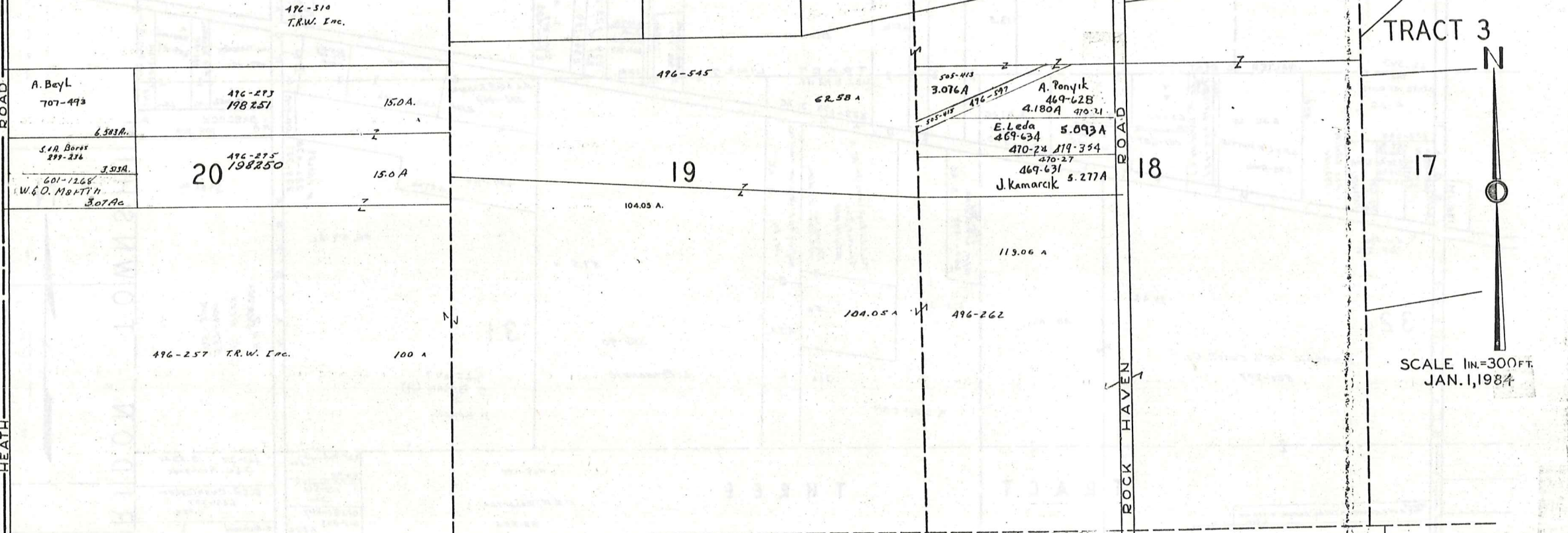


CHESTER TOWNSHIP

VOL. 4 - PG. 33-34 VALLEY VIEW ACRES

688-1077	9.27 A.	12
296-46 J.A. Meyer	9.27 A.	13
345-250 J.E. DeArmona	9.27 A.	14
609-574	9.27 A.	15
686-377	9.27 A.	16
255-521 C.E. EPPIGH	9.27 A.	17
705-992 B.A. Schiffauer	9.27 A.	18
254-223 R.R. HACHTEL	9.27 A.	19
295-146-142	9.27 A.	20
C.J. Anthony 684-857	9.27 A.	21
C. Anthony 509-340	9.27 A.	22
591-1243 D.P. Weiss	9.27 A.	23
453-335 F.J. Kuczyka	9.27 A.	24

170 A	13
170 A	12
170 A	11
170 A	10
170 A	9
170 A	8
170 A	7
170 A	6
170 A	5
170 A	4
170 A	3
170 A	2
170 A	1

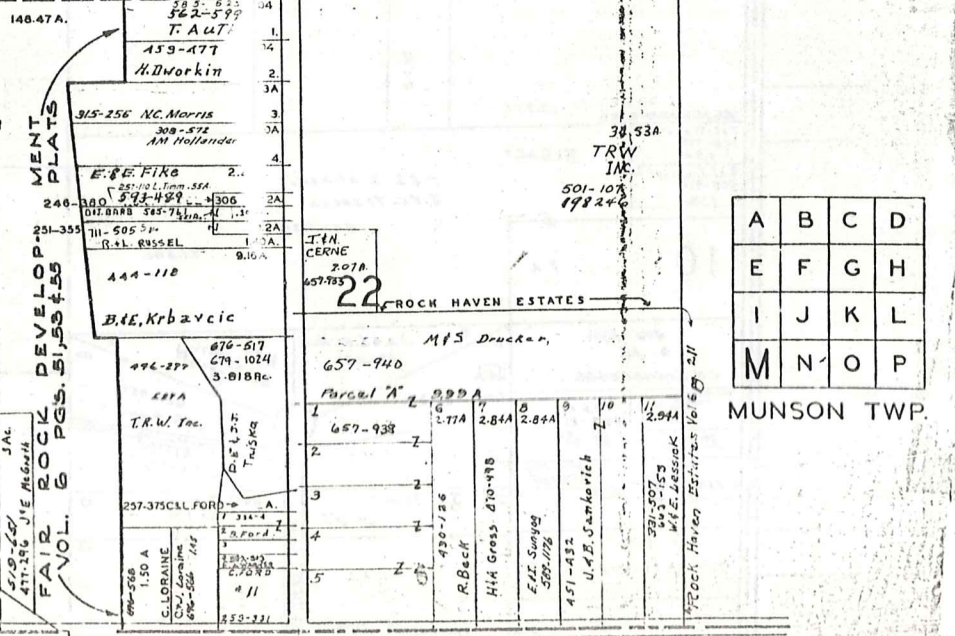
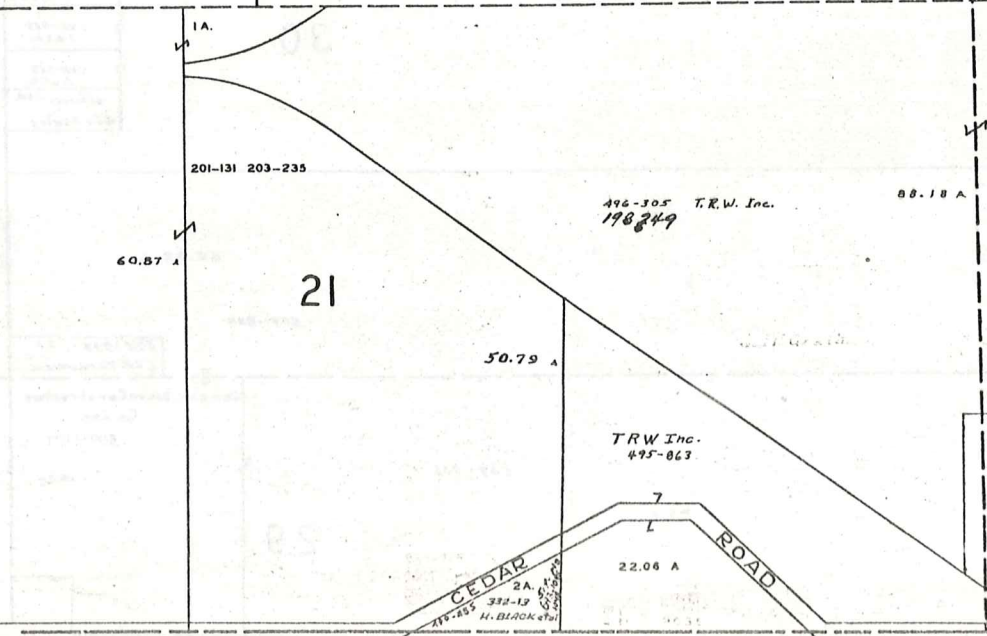
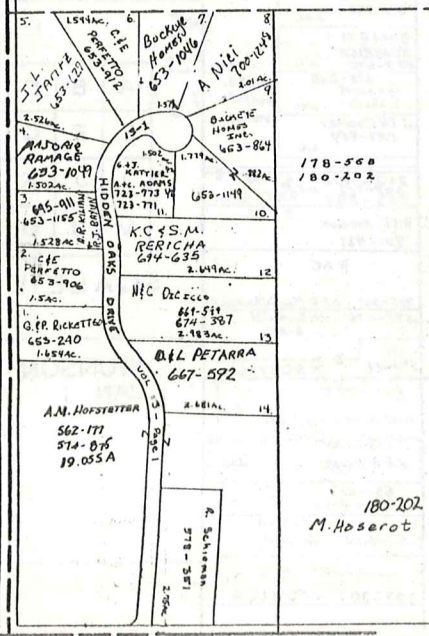


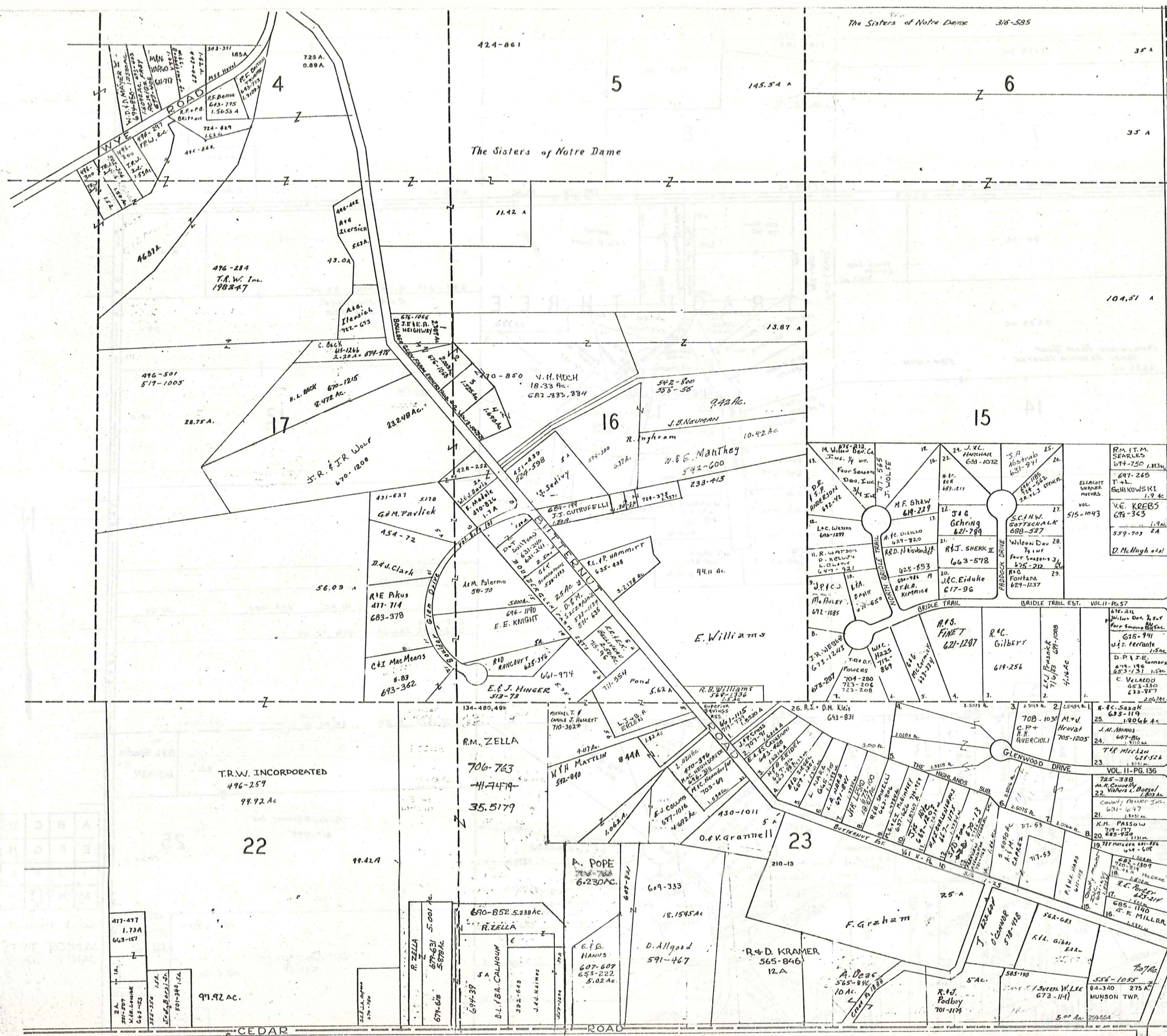
TRACT 3

SCALE 1IN.=300FT. JAN. 1, 1984

A	B	C	D
E	F	G	H
I	J	K	L
M	N	O	P

MUNSON TWP.





BEAN ROAD

TRACT 3

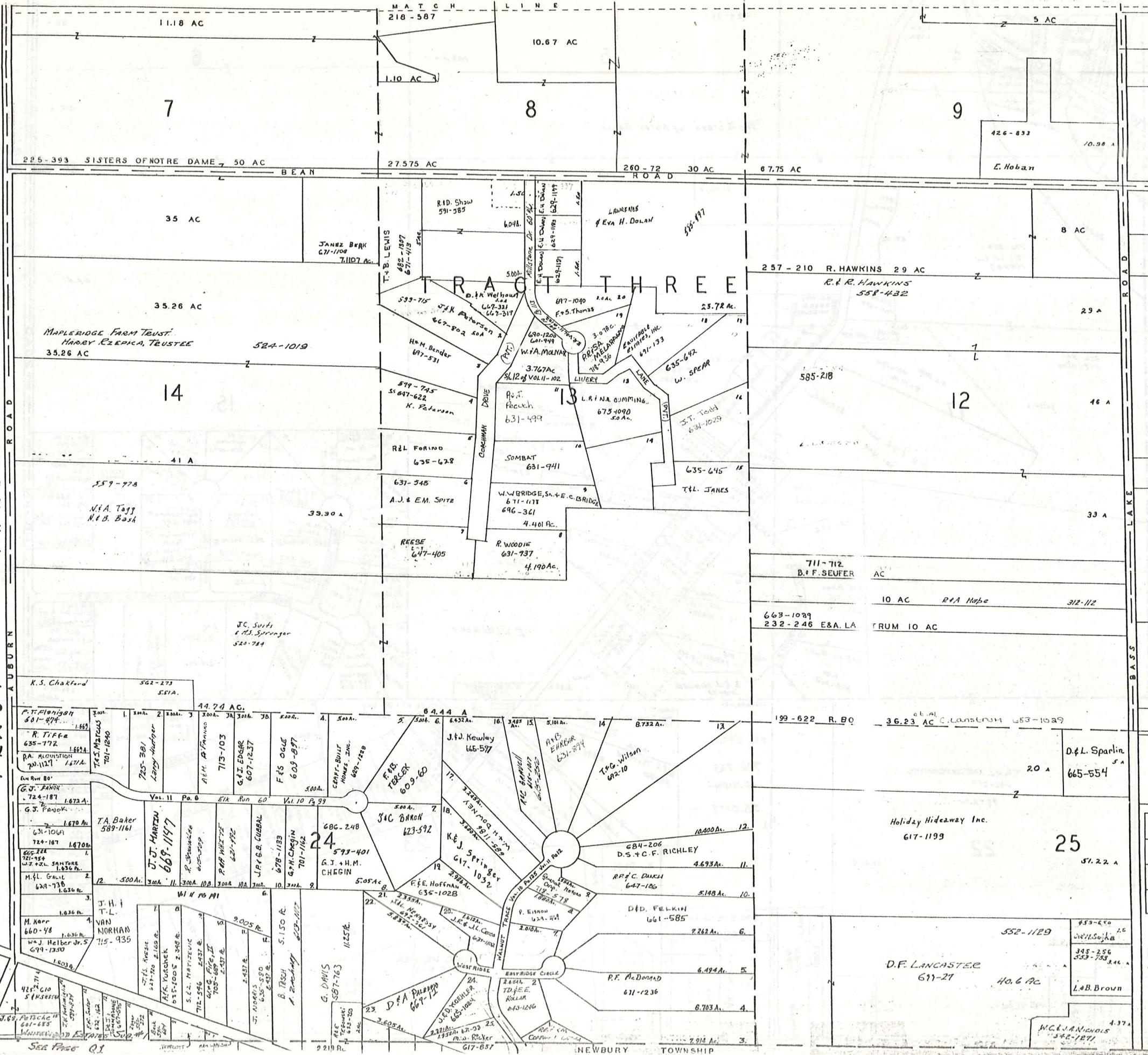


SCALE 1 IN. = 300 FT.  
JAN. 1, 1984

A	B	C	D
E	F	G	H
I	J	K	L
M	N	O	P

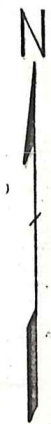
MUNSON TWP.

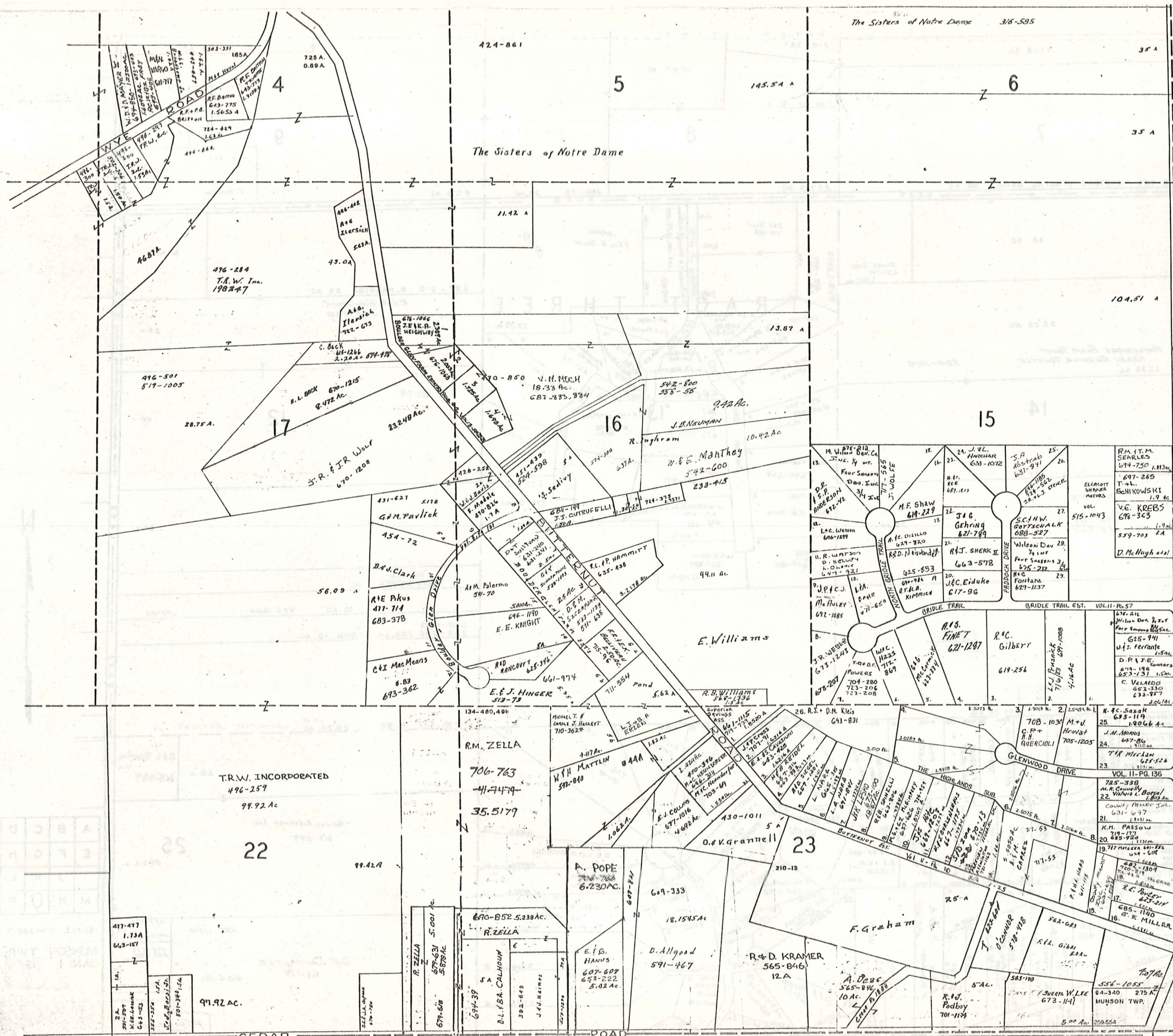
TRACT THREE



A	B	C	D
E	F	G	H
I	J	K	L
M	N	O	P

SCALE 1"=300 FT  
 MUNSON TWP.  
 JAN. 1 190





BEAN ROAD

TRACT 3

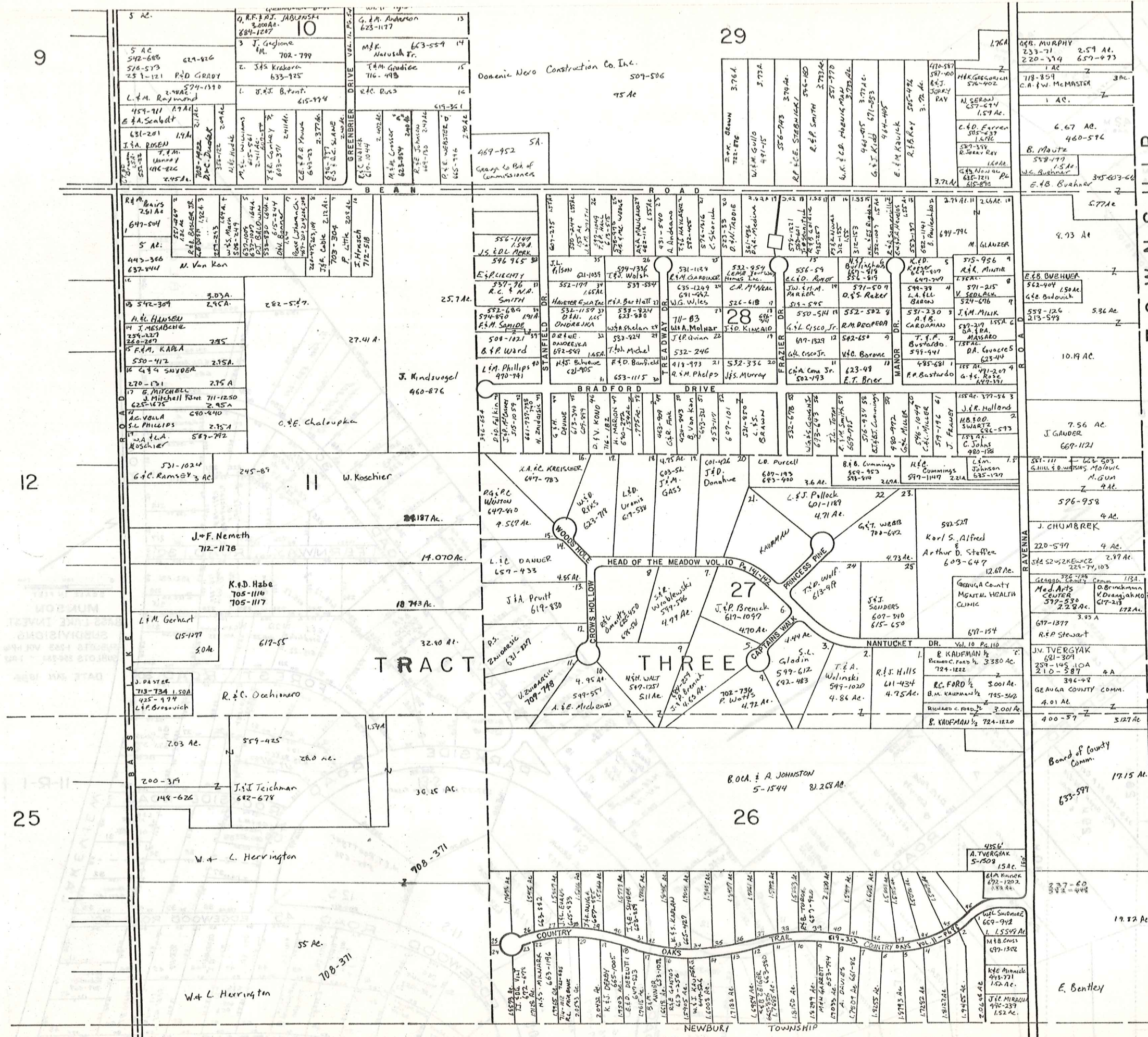


SCALE 1 in. = 300 FT.  
JAN. 1, 1984

A	B	C	D
E	F	G	H
I	J	K	L
M	N	O	P

MUNSON TWP.





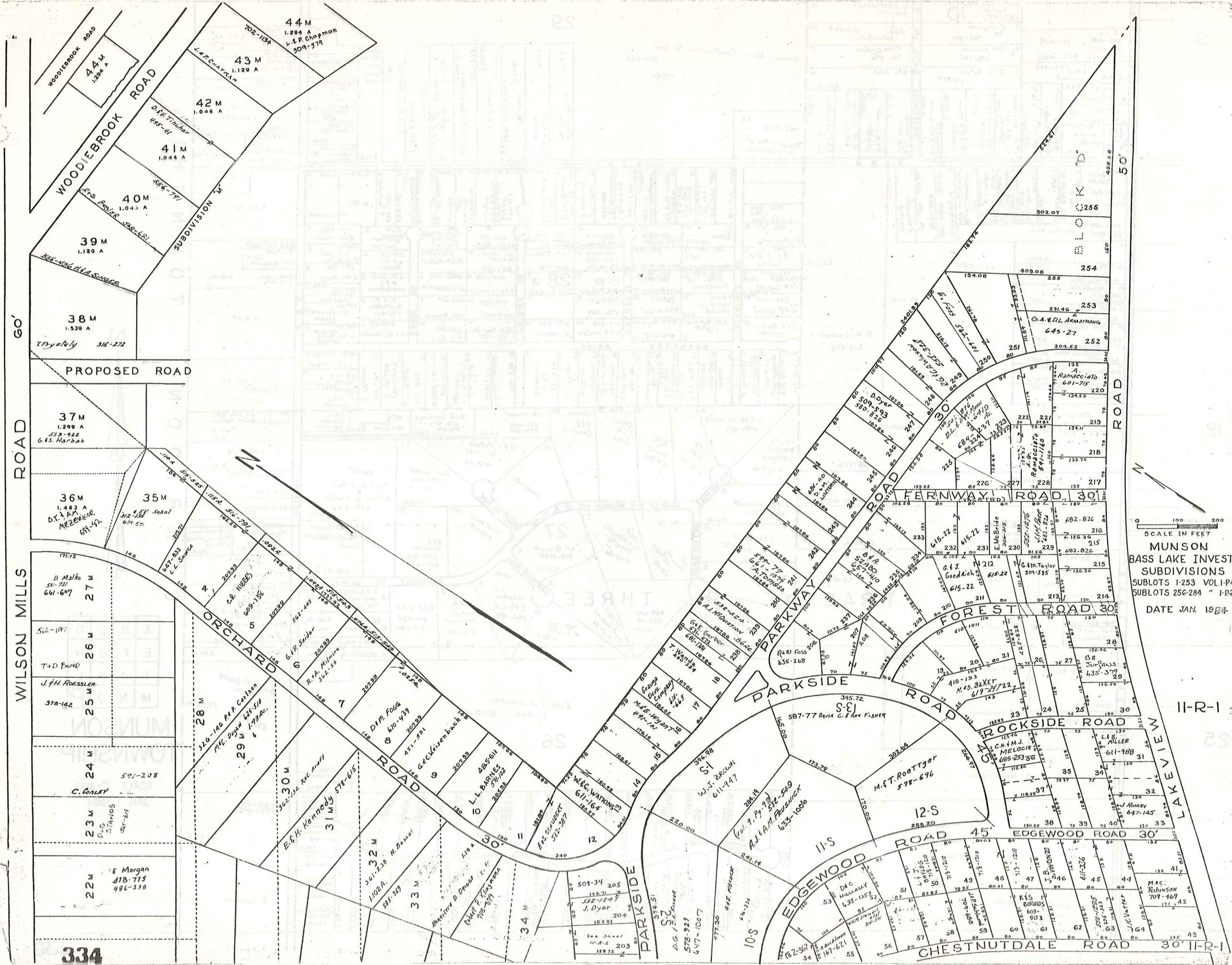
CLARIDON TOWNSHIP



A	B	C	D
E	F	G	H
I	J	K	L
M	N	O	P

**MUNSON TOWNSHIP**

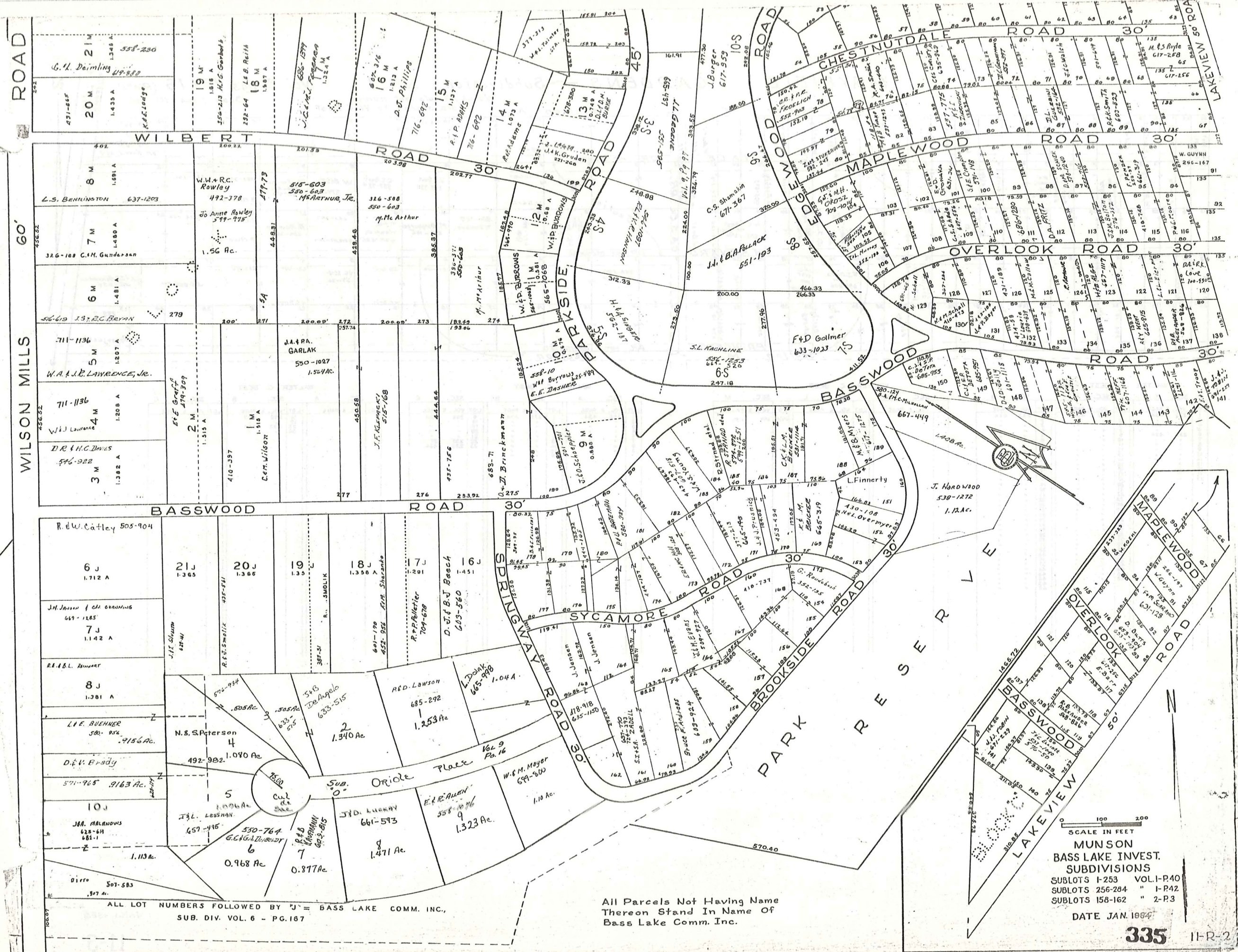
SCALE: 1"=300'  
JAN. 1, 1984



SCALE IN FEET  
 0 100 200  
**MUNSON**  
 BASS LAKE INVEST.  
 SUBDIVISIONS  
 SUBLOTS 1-253 VOL. I-P40  
 SUBLOTS 256-284 " I-R-12  
 DATE JAN. 1904

II-R-1

334



WILSON MILLS ROAD 60'

WILBERT ROAD

ROAD 30'

ROAD 45'

WOOD ROAD 95'

MAPLEWOOD ROAD 30'

OVERLOOK ROAD 30'

BASSWOOD ROAD 30'

BASSWOOD ROAD 30'

ROAD 30'

SPRINGWAY ROAD 30'

SYCAMORE ROAD 30'

ROAD 30'

BROOKSIDE ROAD 30'

PARK RESERVE 30'

BASSWOOD ROAD 30'

OVERLOOK ROAD 30'

MABLEWOOD ROAD 30'

OVERLOOK ROAD 30'

BASSWOOD ROAD 30'

OVERLOOK ROAD 30'

BASSWOOD ROAD 30'

OVERLOOK ROAD 30'

BASSWOOD ROAD 30'

OVERLOOK ROAD 30'

BASSWOOD ROAD 30'

ALL LOT NUMBERS FOLLOWED BY 'J' = BASS LAKE COMM. INC.,  
SUB. DIV. VOL. 6 - PG. 167

All Parcels Not Having Name  
Thereon Stand In Name Of  
Bass Lake Comm. Inc.

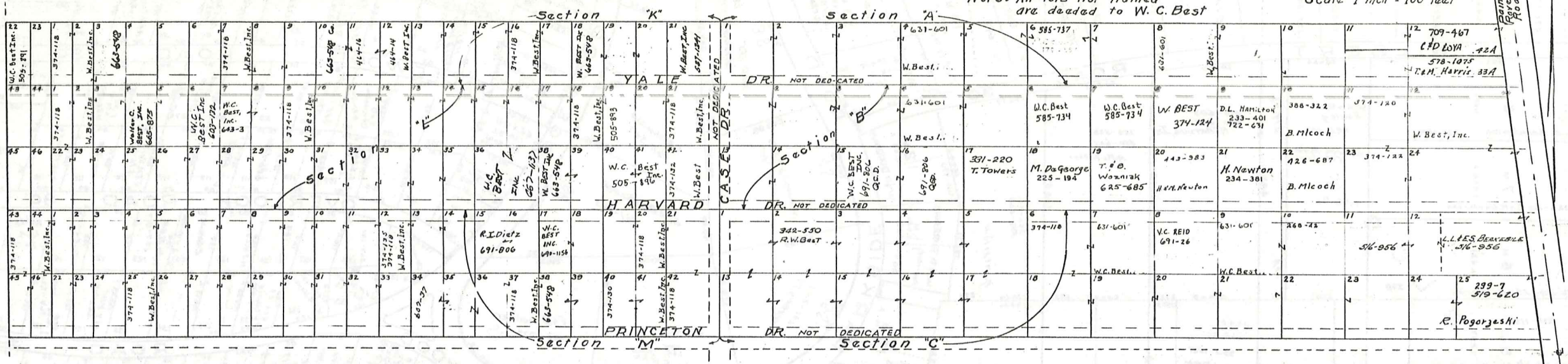
SCALE IN FEET  
100 200

MUNSON  
BASS LAKE INVEST.  
SUBDIVISIONS  
SUBLOTS 1-253 VOL. I-P40  
SUBLOTS 256-284 " I-P42  
SUBLOTS 158-162 " 2-P3

DATE JAN. 1984

MAYFIELD GARDENS — Subdivision No 1 Vol. 3 pgs. 15 & 16 (Plats) N

Note: All lots not named are deeded to W.C. Best Scale 1 inch = 100 feet



WALTER C. BEST INC.

SEC. K		SEC. L		SEC. M	
LOT	VOL. & PAGE	LOT	VOL. & PAGE	LOT	VOL. & PAGE
232	434	232	434	232	434
259	488				
232	434				

WALTER C. BEST

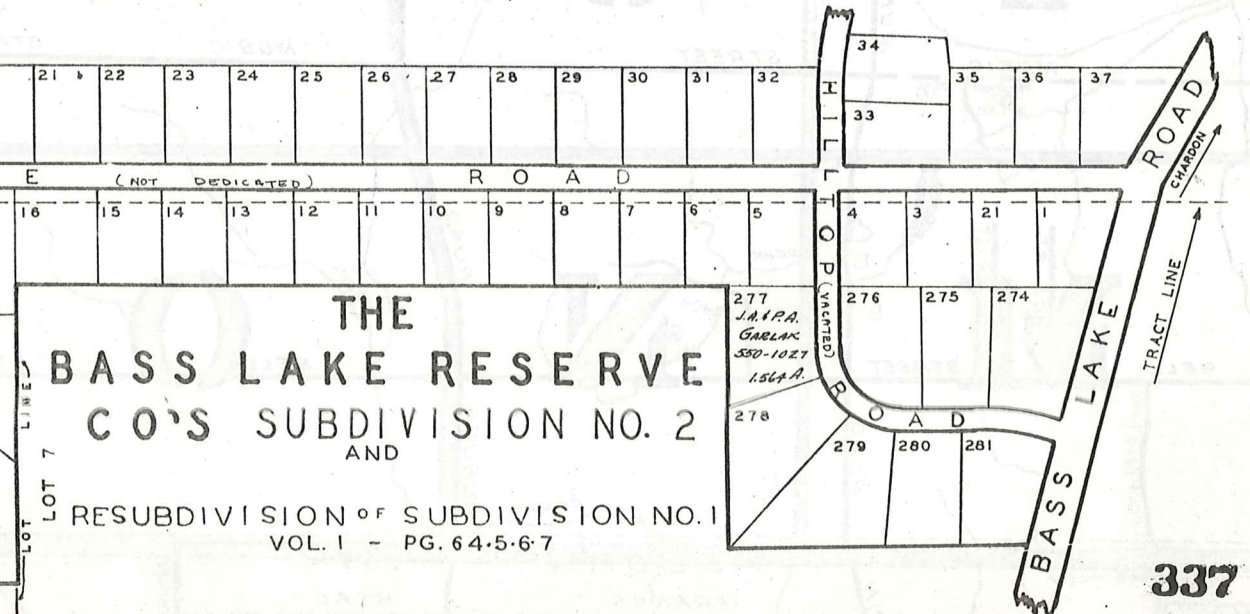
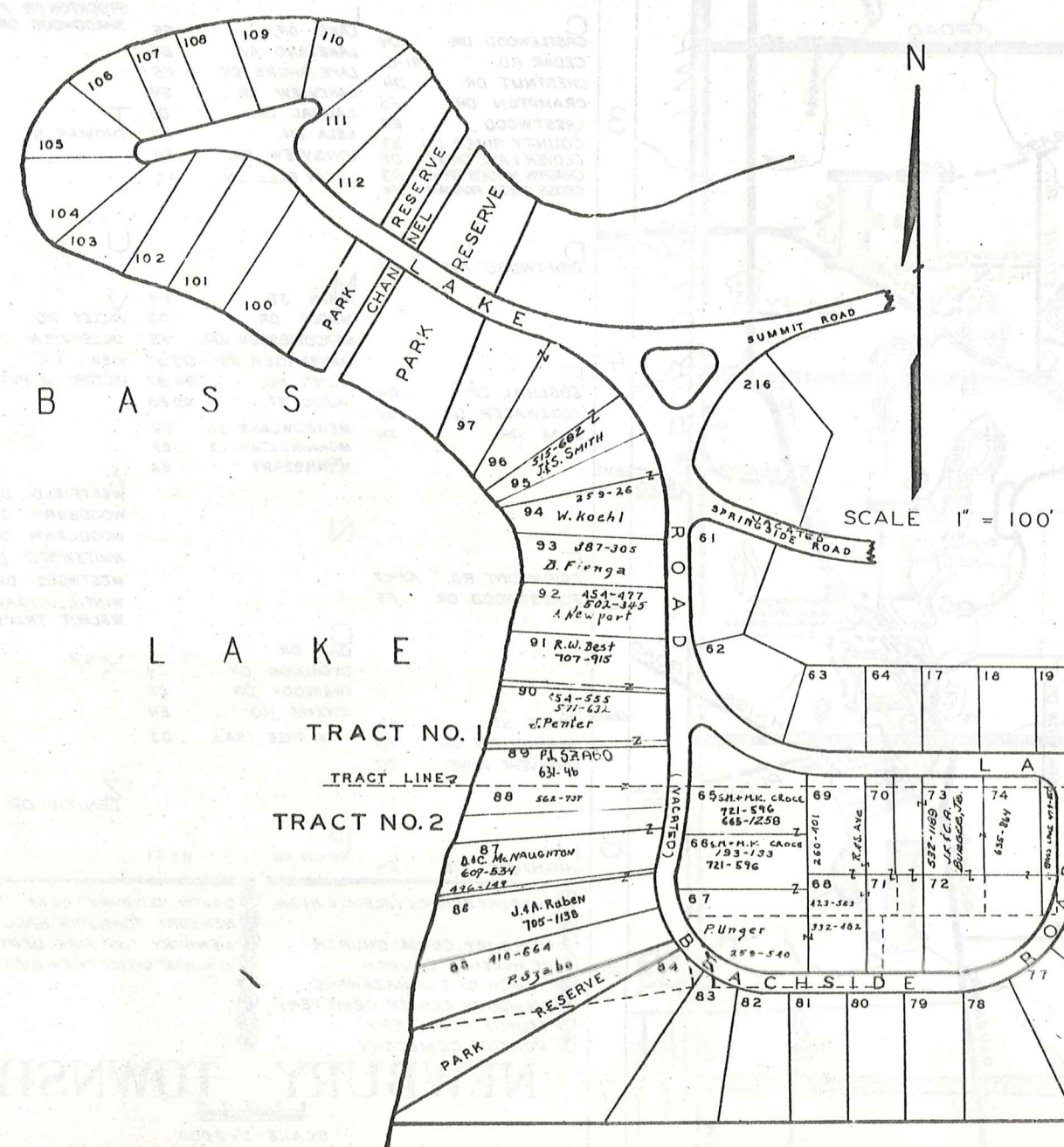
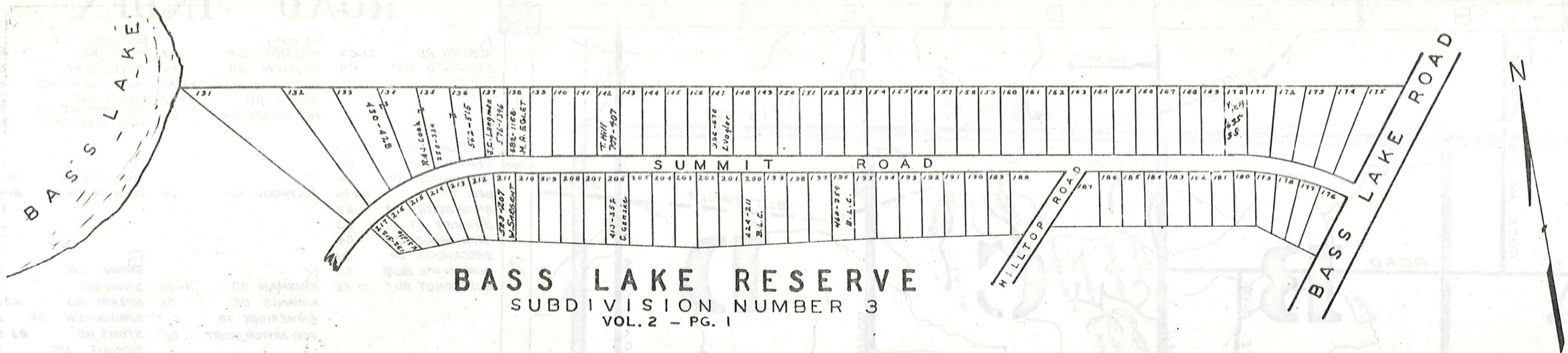
SEC. K		SEC. L		SEC. M	
LOT	VOL. & PAGE	LOT	VOL. & PAGE	LOT	VOL. & PAGE
				1718	690 1154

WALTER C. BEST

SEC. A		SEC. B		SEC. C	
LOT	VOL. & PAGE	LOT	VOL. & PAGE	LOT	VOL. & PAGE
232	434	232	434	232	434
				18	"
				19	"
				20	"
				21	"
				22	"
				23	255 57
				24	232 434

WALTER C. BEST

SEC. A		SEC. B		SEC. C	
LOT	VOL. & PAGE	LOT	VOL. & PAGE	LOT	VOL. & PAGE
		11	232 443		
		12	" 444		
		23	"		
		24	"		



SCALE 1" = 100'

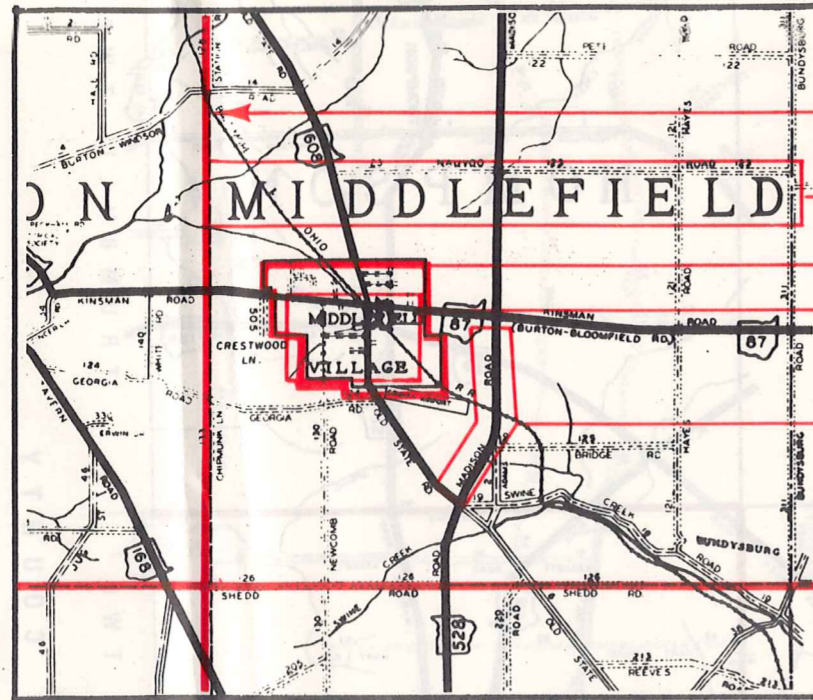
337

JAN. 1984

11-T

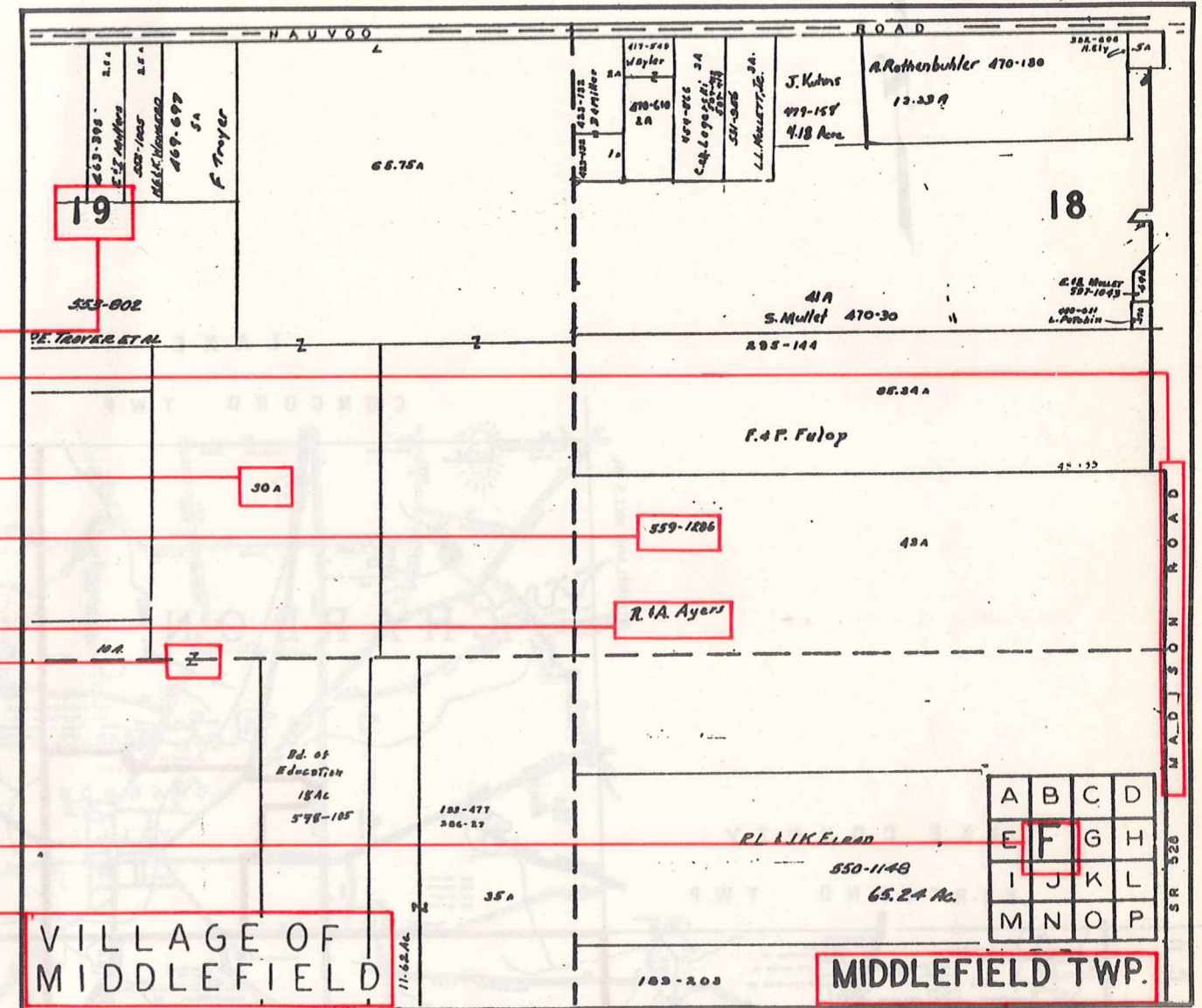
# Explanation and Use Sheet for Geauga County, Ohio

SAMPLE (PARTIAL) COUNTY INDEX MAP



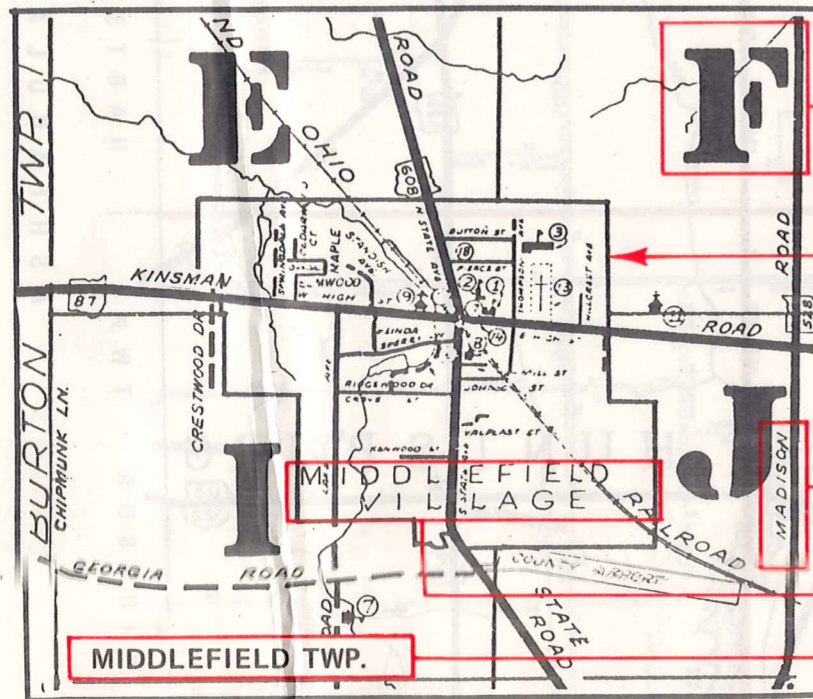
- Township Boundary
- Township Name
- Village Boundary
- Village Name
- Tract Lot Number
- Street Name
- Acreage
- Deed Book & Page
- Owners Name
- Denotes Continous Ownership

SAMPLE (PARTIAL) MAP PAGE



- Map Page Number
- Village Name
- Village Boundary
- Township Name

SAMPLE (PARTIAL) MUNICIPALITY INDEX MAP



- Street Name
- Village Name
- Township Name

## USE OF THE MAP VOLUME

1. LOCATE THE GENERAL AREA OF INTEREST ON THE COUNTY INDEX MAP, ATLAS PAGE 'B', AND NOTE THE MUNICIPALITY NAME (TOWNSHIP OR VILLAGE).
2. REFER TO THE TABLE OF CONTENTS, ATLAS PAGE 'C', AND NOTE THE BEGINNING ATLAS PAGE NUMBER FOR THE MUNICIPALITY OF INTEREST.
3. TURN TO THE PAGE INDICATED. ON THIS PAGE WILL APPEAR AN INDEX MAP FOR THAT MUNICIPALITY.
4. LOCATE THE GENERAL AREA OF INTEREST AND NOTE THE MAP PAGE NUMBER. THIS MAY BE EITHER A LETTER OR A NUMBER.
5. MAP PAGES ARE IN ALPHABETICAL (OR NUMERICAL) SEQUENCE FOLLOWING THE MUNICIPALITY INDEX MAP. FOLLOW SEQUENCE TO THE MAP PAGE INDICATED.
6. LOCATE SPECIFIC PARCEL OF INTEREST AND NOTE THE DESIRED INFORMATION.

NOTE: ON SOME MAPS YOU MAY BE REFERRED TO A DETAIL SHEET SHOWING AN ENLARGEMENT OF THE AREA. THESE MAPS ARE FOUND AT THE END OF THE REGULAR MAP PAGES IN EACH MUNICIPALITY IN EITHER ALPHABETICAL OR NUMERICAL SEQUENCE.

NOTE: CHARDON VILLAGE HAS TITLE SHEETS. TO LOCATE OWNERS NAME, NOTE THE PARCEL NUMBER, REFER TO THE TITLE PAGE FOLLOWING THE MAP OF INTEREST, FOLLOW NUMERICAL SEQUENCE TO THE PARCEL NUMBER OF INTEREST AND NOTE THE DESIRED INFORMATION. IN ALL OTHER MUNICIPALITIES THE OWNERS NAME APPEARS ON THE MAP PAGE.

This book is the property of REAL ESTATE DATA, INC. and is distributed by REDI under a leasing arrangement requiring return to REDI upon termination of the lease. REDI reserves the right to reclaim this book if found in the possession of any firm or person where possession was obtained through any unauthorized source.